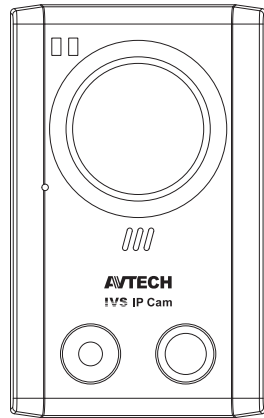


Quick Setup with iPhone / iPad

Remote access fully compatible with:
1. Internet Explorer on Windows OS
2. iPhone, iPad & Android mobile devices

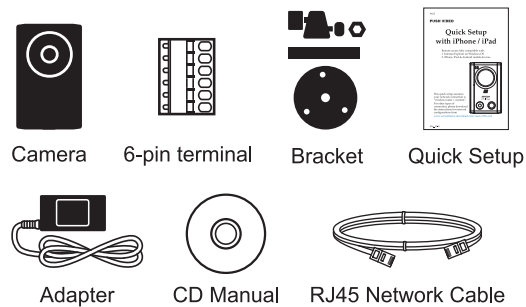


This quick setup assumes your network connection is "wireless router + modem". For other types of connection, please download the instructions for network configurations from

www.surveillance-download.com/user/n90x.swf

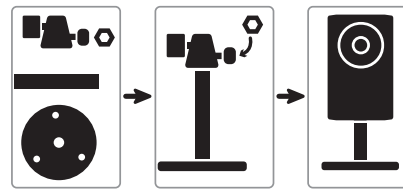
90x_V0.9

Package Content



1 Assemble & Install

1. Fasten the base of the bracket (the round one) to where the camera is installed.



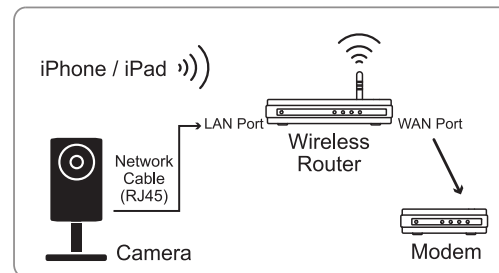
The distance between your camera and the location you want to monitor should be **3 ~ 4** meters.

2. Assemble the bracket and the camera, and adjust the viewing angle of the camera.
3. Connect your camera to power.

2 Prerequisite

Before configuring network setup with iPhone / iPad, make sure you have checked the followings:

- (Recommended) Apply your own ADSL or cable Internet service to simplify the network configurations.
- Your camera is connected to your wireless router with a RJ45 network cable, it's powered on, and its LAN status indicator (🔦) is always on (not blinking).

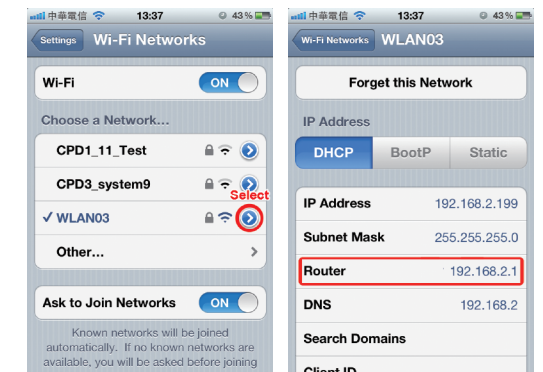


- You have installed our mobile program, *EagleEyes-Lite* or *EagleEyes-Plus* for iPhone, or *EagleEyesHD-Lite* or *EagleEyesHD-Plus* for iPad. If no, please download from "App Store".

- (Optional) Your wireless router supports UPnP, and this function is enabled.
- You have checked the IP address used by your wireless router as instructed below, and written them down. You will need them later.

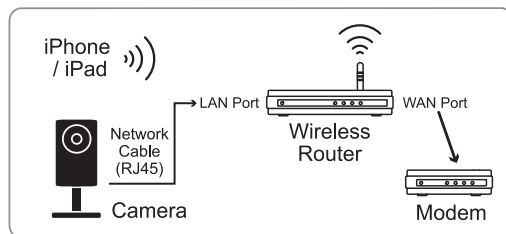
Connect your iPhone / iPad to the wireless router with this camera connected, and go to "Settings" → "Wi-Fi". Select ">" near the selected wireless network to enter the details.

Router: The IP address of your wireless router.



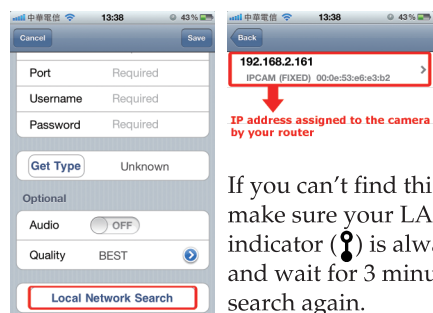
3 Configure with iPhone / iPad

Step1: Connect your iPhone / iPad to the wireless router which has AVN90X connected.



Step2: Open "EagleEyes-Lite" (or "EagleEyes-Plus"), and click "+" to enter the new device page. Then, select "Local Network Search" to search your network camera.

The IP address shown is the address assigned to your camera by your router.



If you can't find this camera, make sure your LAN status indicator (🔦) is always on, and wait for 3 minutes to search again.

Step3: Select the IP address to enter the setting page, and switch the tab from "DHCP".

The default port number is 88. You may change it to any value from 1 ~ 9999 (such as 8080) if the port number of 88 is blocked.

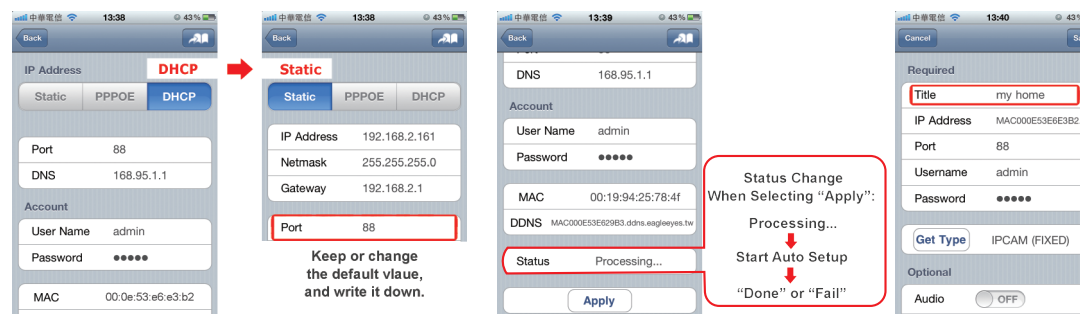
Then, note down the IP address and port number you see here. You'll need them in Step 7.

Step4: Select "Apply" to confirm all your changes, and **WAIT till** you see the message "Done" or "Fail" in "Status".

Regardless which message you see, proceed as instructed below:

- For **Done**, you'll automatically return to the new device page.
- For **Fail**, select "🔦" on the top right side. You'll be prompted to select "DDNS" or "Local IP". Select "DDNS" and return to the new device page.

Step5: In the new device page, give a meaningful name for this connection in "Title", and select "Save". Then, continue with Step 6 ~ 7 for port forwarding.



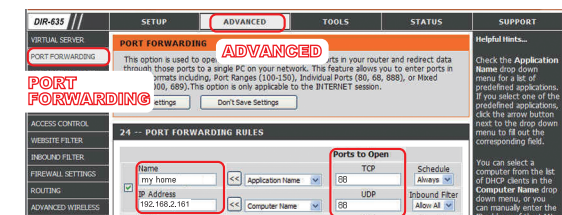
Step6: Open your web browser on iPhone, and enter the IP address of your wireless router ("192.168.2.1" in our example) to access.

Step7: Go to the port forwarding (or virtual server) rule configuration page.

The naming of port forwarding or virtual server may vary based on different router brands. To know where it is, please refer to the user manual of your wireless router.

Then, enter the IP address and port number you set for this camera in Step3, and enable this rule.

Take D-Link wireless router as an example: Go to "ADVANCED" → "PORT FORWARDING".



IP Address:	The IP address of the camera set in Step3
Ports to Open:	The port number set in Step3

Step8: Check your status indicator "🔦" and "⚡" and see if they're both always on (not blinking).

- If yes, continue checking your connection in "4. Check Your Connection".
- If "⚡" keeps blinking, return to Step1 and configure your network setting again.

4 Check Your Connection

When you complete the network setup, check your connection as instructed below.

Step1: Switch your network mode to 3G mode on iPhone or iPad.

Step2: Start *EagleEyes*, and select the connection you just added to see if you can access this camera successfully.

- If yes, your network setup is successfully.
- If no, go to Step3.

Step3: Switch your network mode to wireless mode on iPhone or iPad.

Step4: Start *EagleEyes*, and add a new connection with the IP address (e.g. 192.168.2.161) and port number (e.g. 88) you set in Step3 of "3. Configure with iPhone / iPad". Then, see if you can access this camera with this new connection successfully.

- If yes, return to Step6 ~ 7 in "3. Configure with iPhone / iPad" for port forwarding.
- If no, start from Step3 in "3. Configure with iPhone" again to reconfigure this camera..

Change Default Account

To ensure your account safety, after finishing network setup, please access the camera, and select "⚙️" → "Account Configuration" to change the default user name and password with new one you prefer.

Factory Default Values

IP Address	192.168.1.10	User Name	admin
Port Number	88	Password	admin

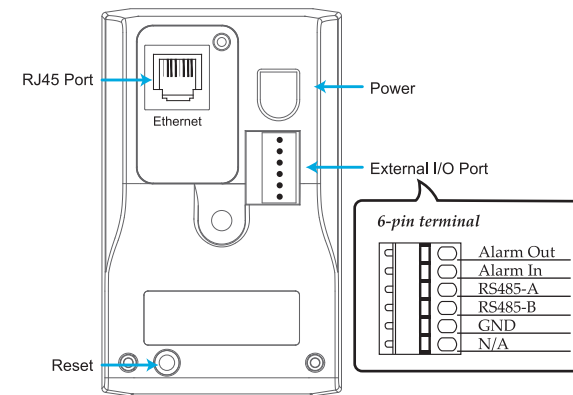
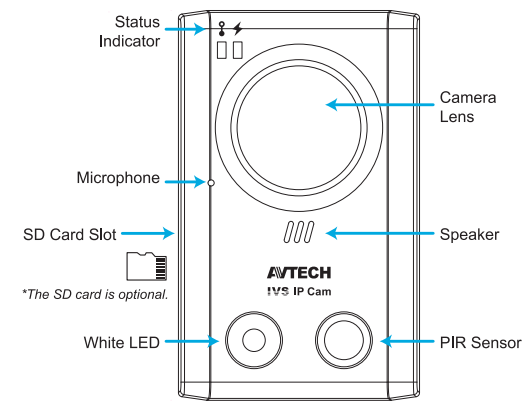
Status Indicator

Indicator	LAN	Internet
Always On	Connected	Connected
Blinking*	Disconnected	Disconnected*

* The 3G connection setting is not completed when the Internet indicator is blinking in the fashion below:
5 seconds on → 0.5 second off → 0.5 second on → 0.5 second off → 5 seconds on

For details, please download the "Operation Guide" from: www.surveillance-download.com/user/n90x.swf

Camera Overview

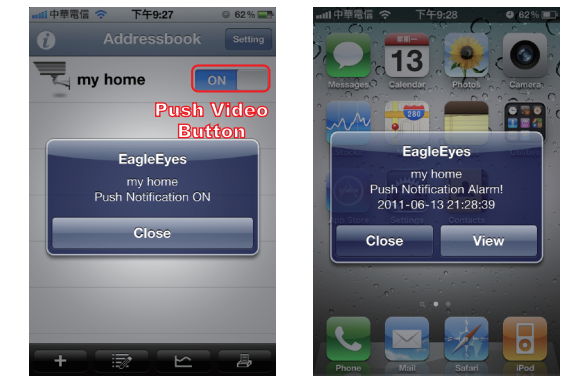


Activate Push Video

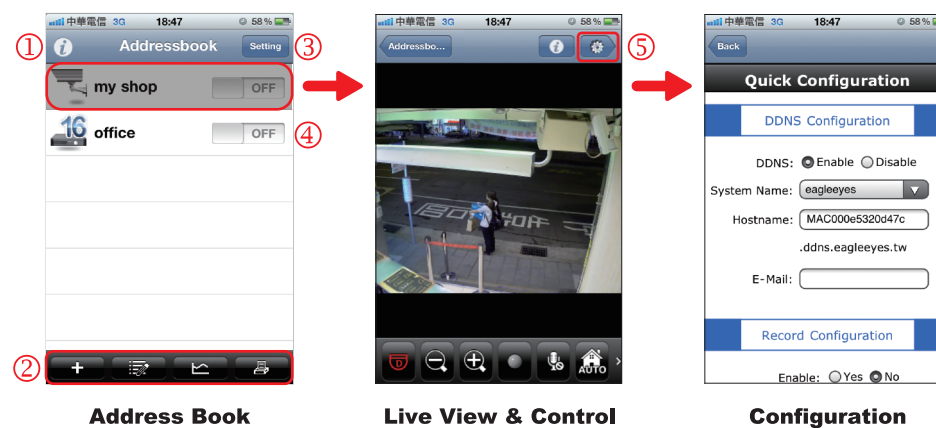
When "Push Video" is enabled, a push message will be sent to you for an alarm event after event occurrence within 5 seconds.

For more details about Push Video, download the user manual from www.surveillance-download.com/user/n90x.swf.

Step1: Open "EagleEyes", and switch the Push Video button to "ON". You'll receive the message indicating that Push Notification (Push Video) is on.
Step2: Return to the main menu of your phone. A push message will be sent to you for an alarm event. Select "View" to immediately play the recorded clip.



EagleEyes Operation



Start *EagleEyes* to enter *Address Book*:

①	Info	Select to learn more about how to use EagleEyes, where to find video demo, and join our Facebook.
②	Tool Bar	The first two buttons from the left are used for the address book, and the other two are special buttons.
③	Setting	Configures EagleEyes-related parameters.
④	Push Video Switch	Enables or disables "Push Video".

Select the connection set to enter *Live View & Control*:

⑤	Configuration	Select to enter the configuration page of this camera to change some camera parameters.
---	---------------	---

For more details about EagleEyes operation, please visit our official website: www.avtech.com.tw/ee_icon_used.aspx.

Q&A

For more details about EagleEyes Q&A, please visit our official website: www.avtech.com.tw/support.aspx?Type=1.

Q1: I can't connect to this camera with 3G network, but it works with my wireless network. Why?

A1: Your network configuration is not yet completed. Please set port forwarding as instructed in "3. Configure with iPhone / iPad" (Step7 ~ 8).

Q2: My live images are not fluent. Why?

A2: Image fluency could be affected by the local network upload bandwidth, router efficiency, client network download bandwidth, complexity of live view, and more.
(Recommended) To have the best image fluency, select QVGA; to have the best image quality, select "SXVGA"; to have normal image fluency and quality, select "VGA".

Q3: The detection range of the built-in human detection sensor seems too short and the sensor is not sensitive enough. Did I do anything wrong on installation?

A3: The human detection sensor might be influenced by the temperature of ambient environment and human beings, and the applicable working temperature is up to 30°C. To get more accurate and precise detection, you may connect external alarm devices, such as magnetic contacts.

There're some tips for installation. For details, please go to www.avtech.com.tw/support.aspx?Type=1.

Q4: The live video keeps flickering. Why?

A4: Please try adjusting the power line frequency to "60 Hz" or "50 Hz" from your iPhone by selecting "⚙️" to enter "Quick Configuration". Then, scroll down the page and click "Advanced". Go to "Advance Setup" → "Camera" to change setting.

Q5: The data originally saved in the micro SD card are removed after inserting to this camera for video storage. Why?

A5: For security reasons, the storage format used for this camera is different from the format we mostly know. Therefore, this camera will remove all data previously saved in the micro SD card and format it.

Please copy all your data saved in the micro SD card to other storage media (if any) before inserting it to this camera.

Q6: I want to connect more alarm I/O devices and have Push Video. Is it possible?

A6: Yes, please purchase our optional I/O control box, AVX951A, and connect it to this camera with RS485 control wires. It has four alarm input and four alarm output ports to fulfill various installation needs.